

Schwierigkeit: S3, mittel

Aufbau: Planenwagen „Getränke Klaus“ blau



Aufbau: Pritsche mit niedrigen Bordwänden „K15“



Aufbau: Planenwagen „LMT GmbH“ gelb



Aufbau: Pritsche mit hohen Bordwänden „K17“

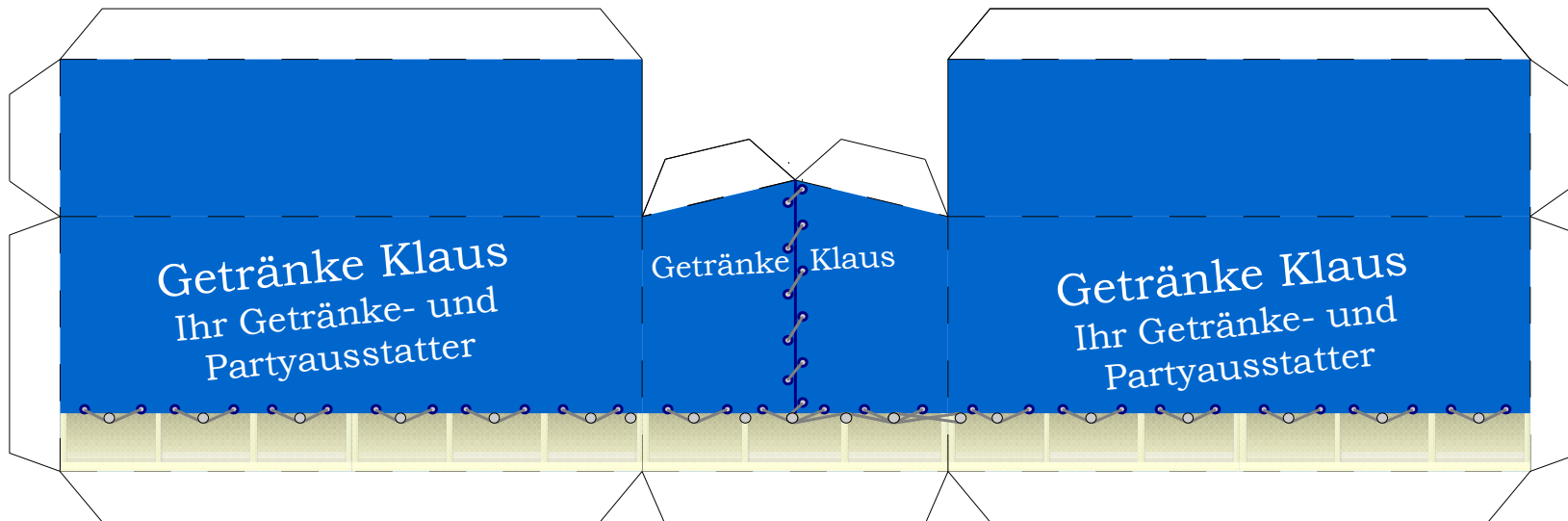
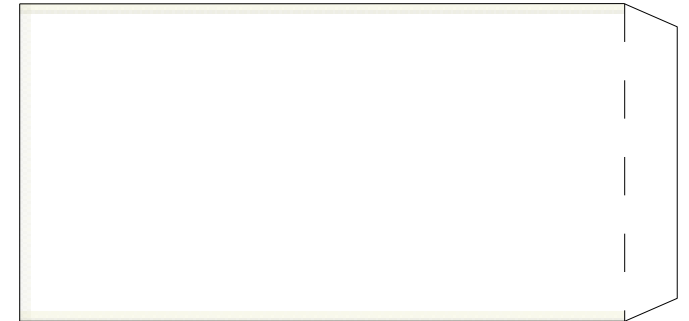


Projekt Bastelbogen

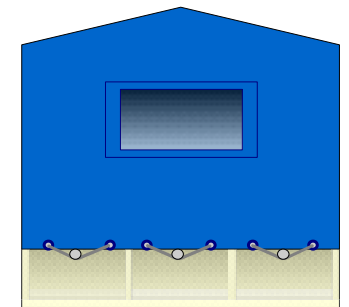
www.bastelbogen.net

LKW-Aufbauten für Zweiachser

Aufbau: Planenwagen „Getränke Klaus“ blau

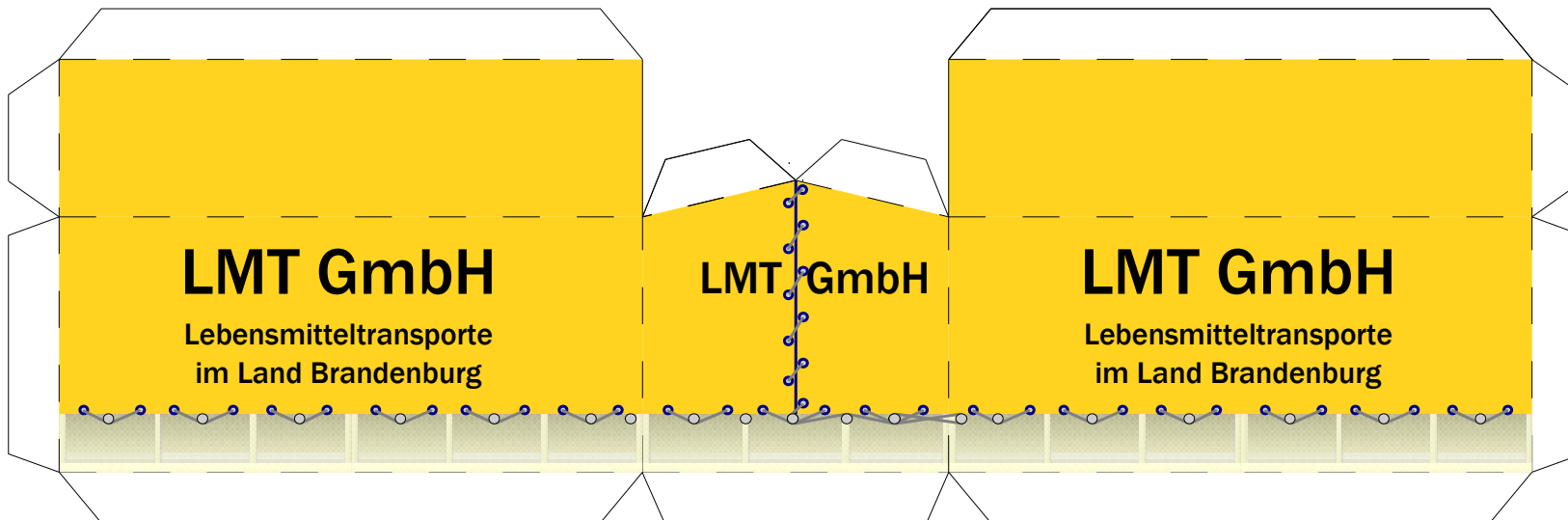
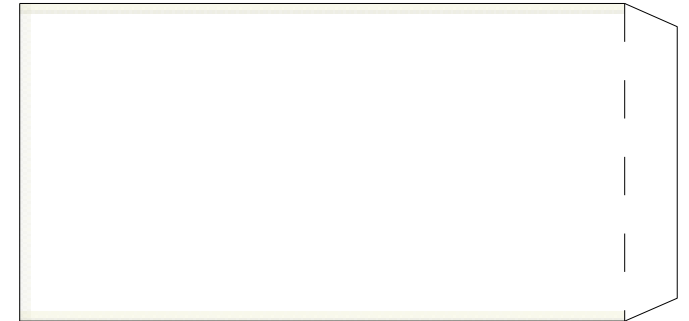


www.bastelbogen.net

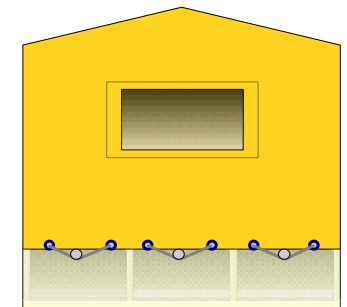


LKW-Aufbauten für Zweiachser

Aufbau: Planenwagen „LMT GmbH“ gelb



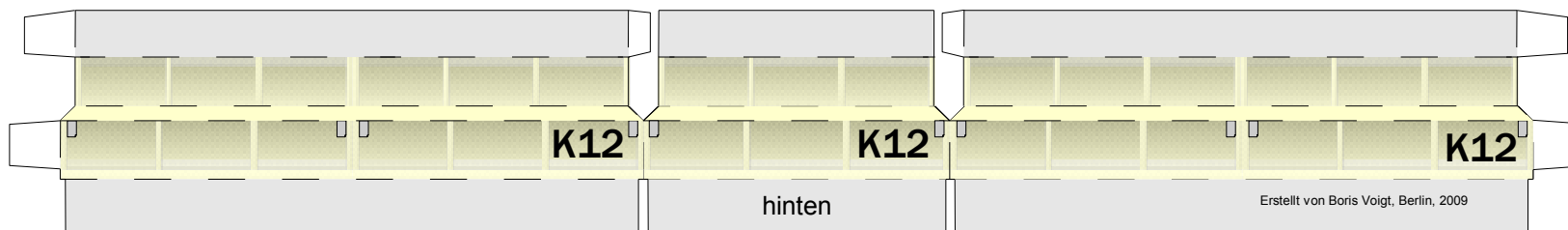
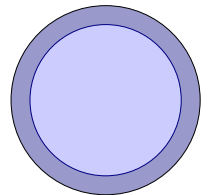
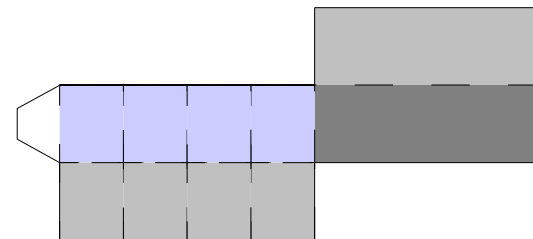
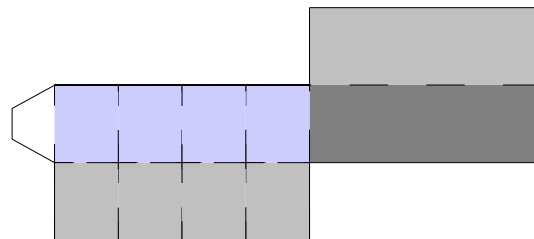
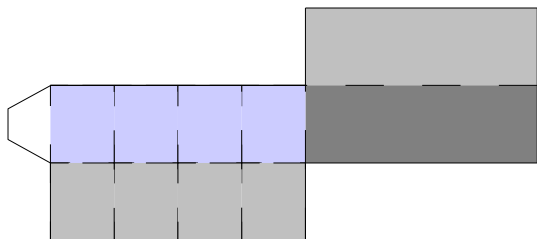
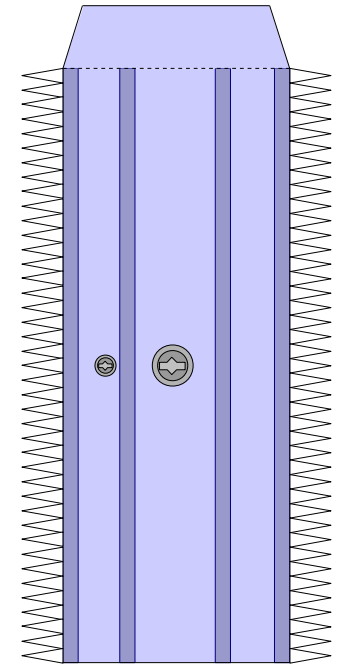
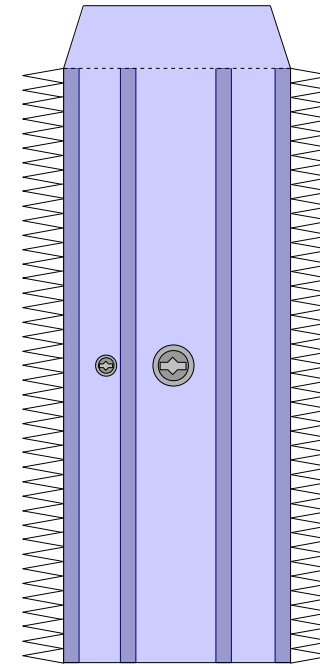
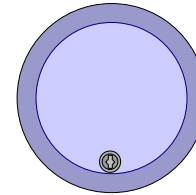
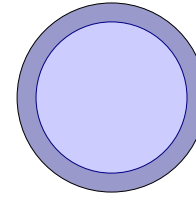
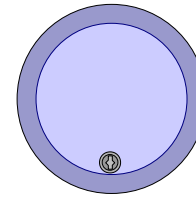
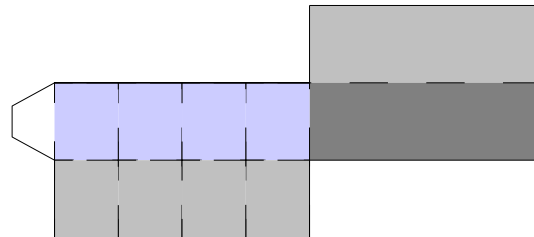
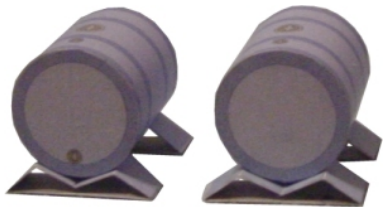
www.bastelbogen.net



Bastelbogen Nr. 320k

LKW-Aufbauten für Zweiachser

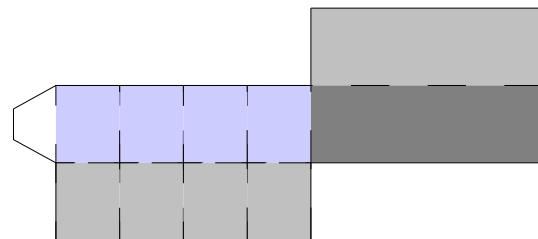
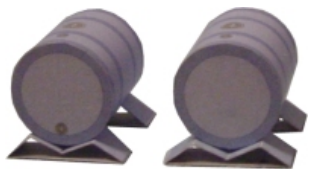
Aufbau: Pritsche mit niedrigen Bordwänden „K15“



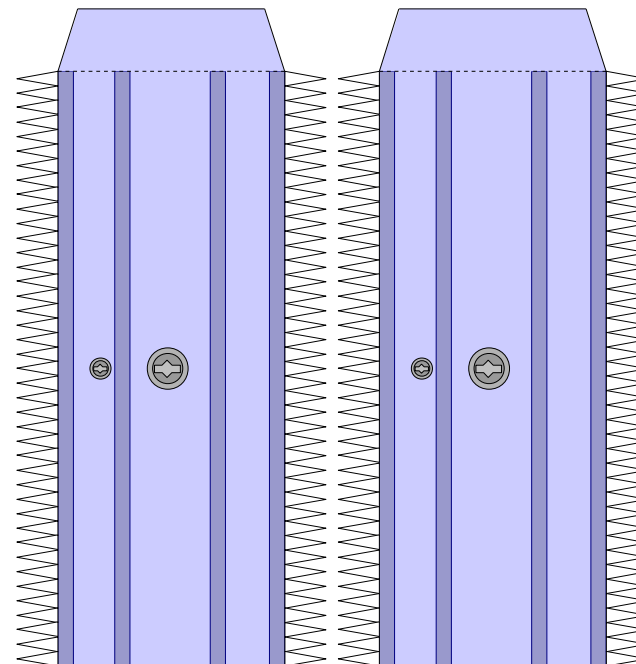
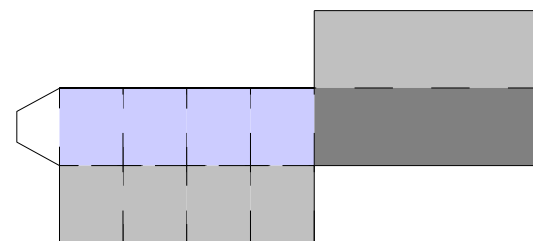
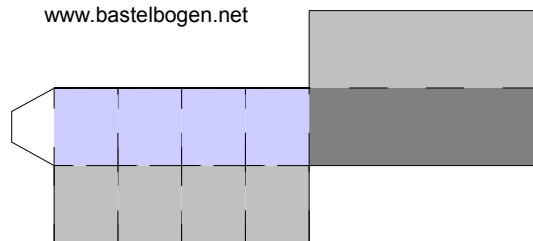
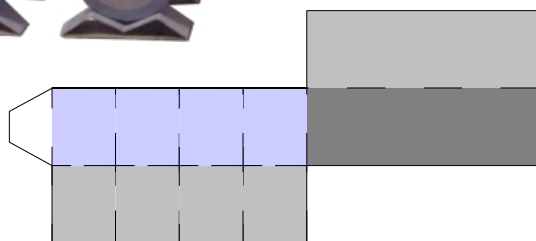
Bastelbogen Nr. 320k

LKW-Aufbauten für Zweiachser

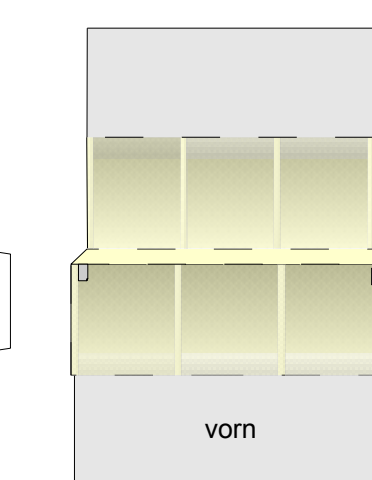
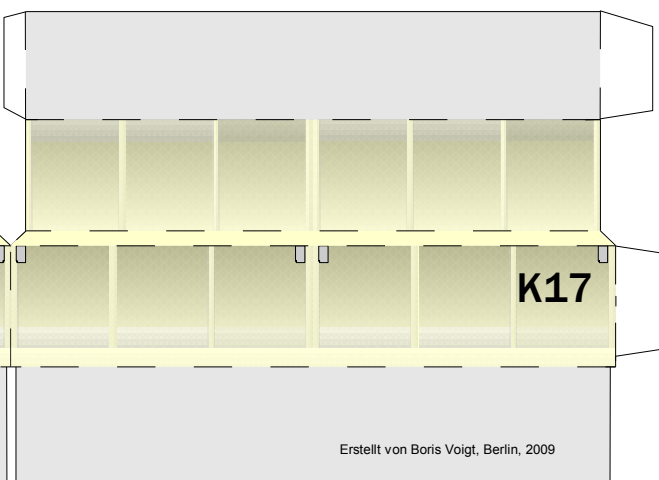
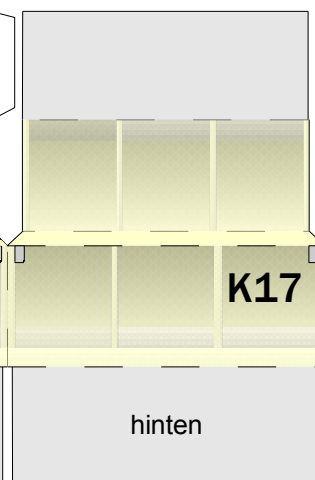
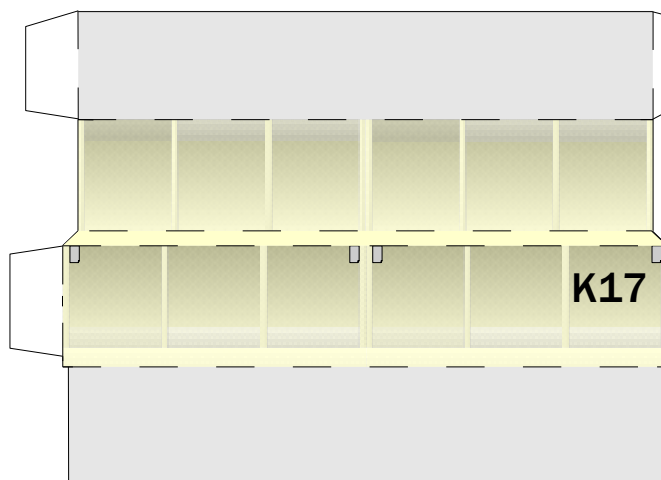
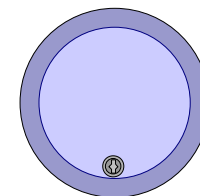
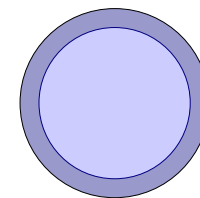
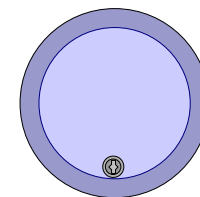
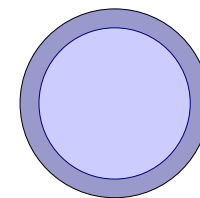
Aufbau: Pritsche mit hohen Bordwänden „K17“



www.bastelbogen.net



Seite 5



K17

K17

K17

hinten

Erstellt von Boris Voigt, Berlin, 2009

vorn